

*Push in gasket then firmly run-in with gasket roller to ensure it is fully engaged

| Issue | Date | Change detail | Drawn by | Approved |
|-------|----------|---|----------|----------|
| 1 | 22/02/11 | First issue | PS | PS |
| 2 | 04/02/16 | Profiles and details updated | PS | PS |
| 3 | 13/05/20 | Components included & curved corner added | SM | PH |
| 4 | 25/08/20 | Glazing Panel Stop Bracket added | SM | SM |



Coventry
 Alderman's Green Ind Est
 Coventry CV2 2QU
 024 7660 2022
 www.brettmartin.com

Sill / base detail

To be read in conjunction with the Marlon-Clickfix-VF-Installation-Guide

Title: Installation - Marlon Clickfix 1040 - VF|90 (metal frame)

Page: 1 of 8

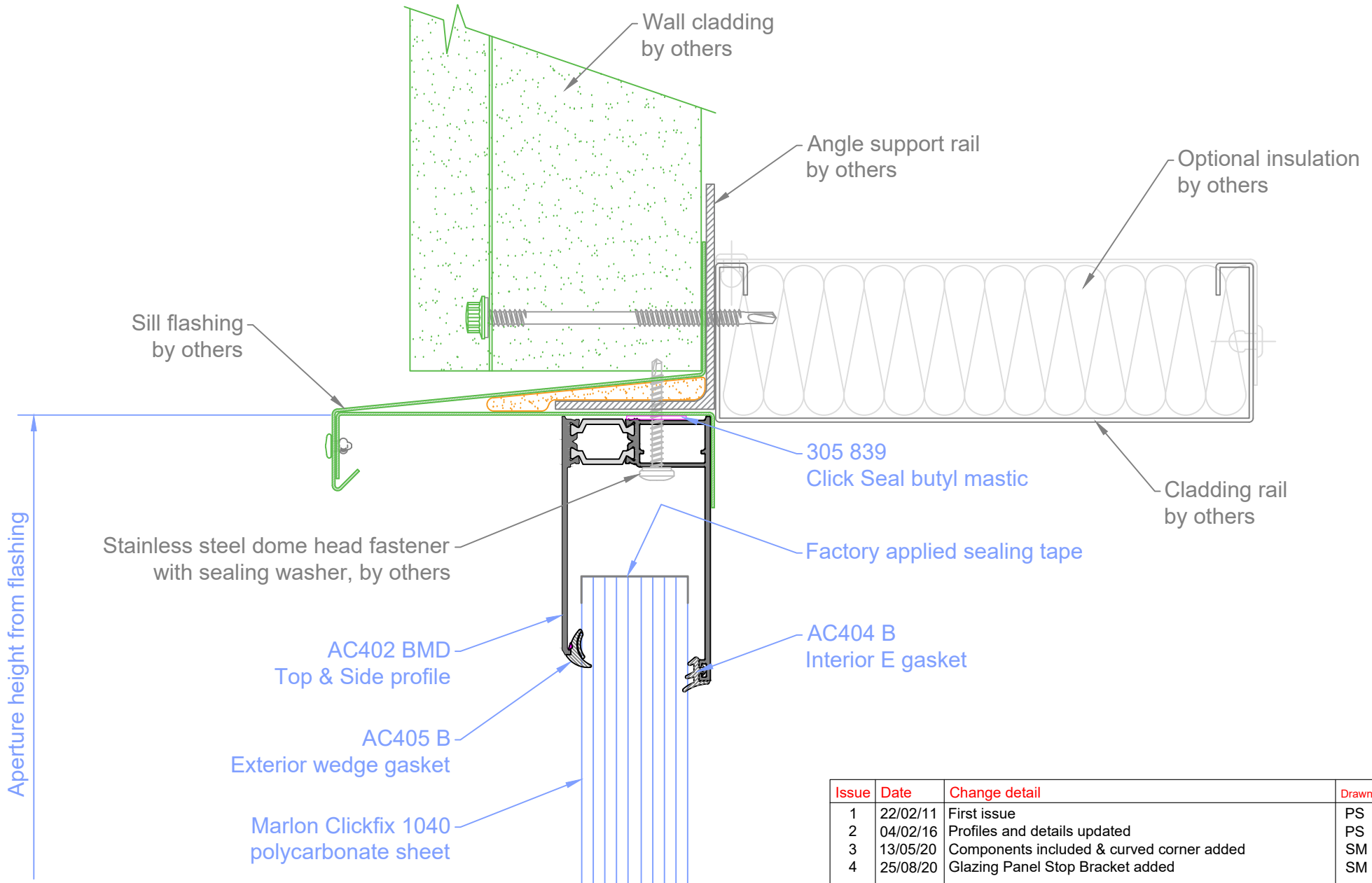
Drawn by: PS

Dwg No:

Scale: NTS

Approved:

HC237/1



| Issue | Date | Change detail | Drawn by | Approved |
|-------|----------|---|----------|----------|
| 1 | 22/02/11 | First issue | PS | PS |
| 2 | 04/02/16 | Profiles and details updated | PS | PS |
| 3 | 13/05/20 | Components included & curved corner added | SM | PH |
| 4 | 25/08/20 | Glazing Panel Stop Bracket added | SM | SM |

Head / top detail

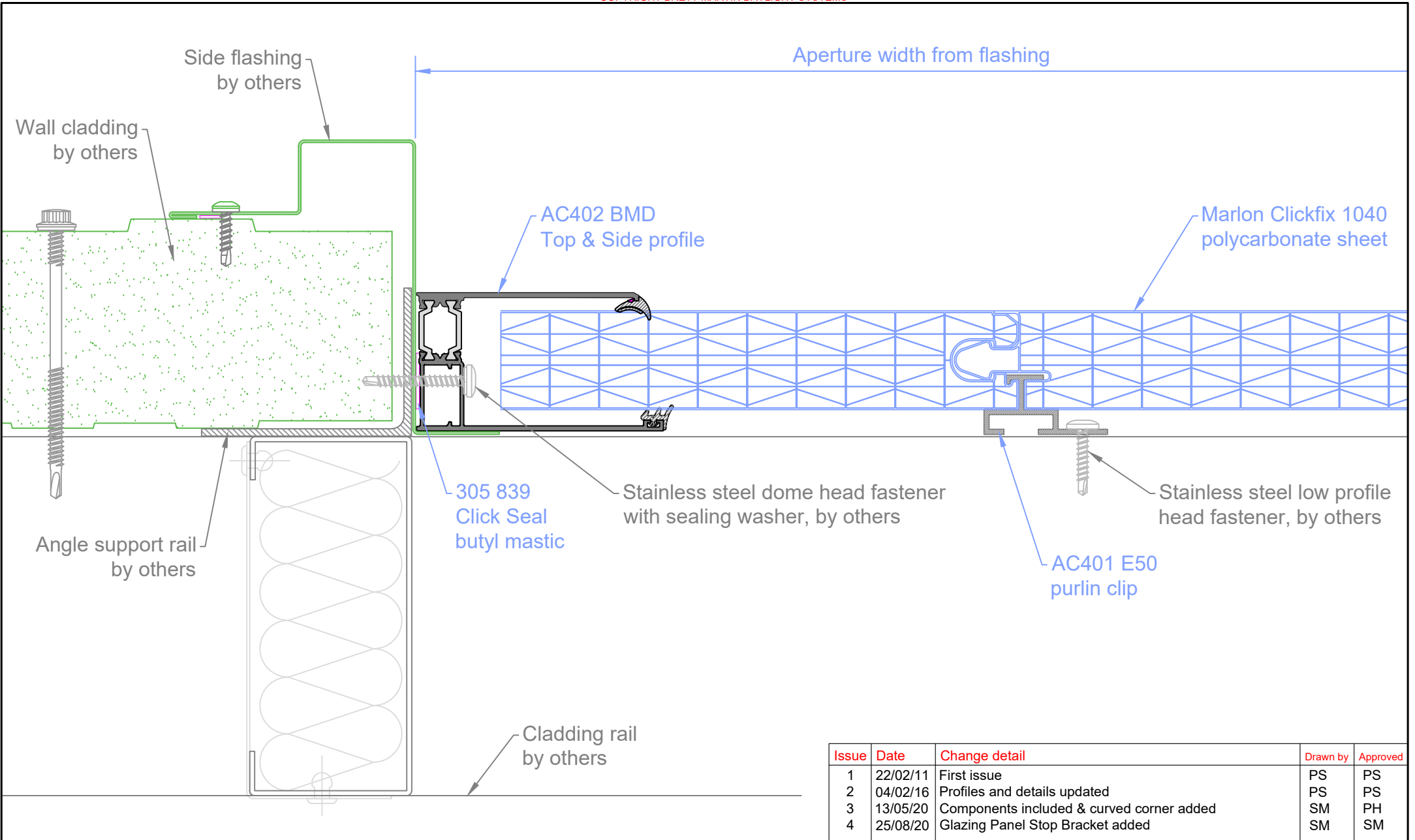
Title: Installation - Marlon Clickfix 1040 - VF|90 (metal frame)

| | | |
|--------------|--------------|----------------|
| Page: 2 of 8 | Drawn by: PS | Dwg No: |
| Scale: NTS | Approved: | HC237/2 |



Daylight Systems

Coventry
 Alderman's Green Ind Est
 Coventry CV2 2QU
 024 7660 2022
 www.brettmartin.com



| Issue | Date | Change detail | Drawn by | Approved |
|-------|----------|---|----------|----------|
| 1 | 22/02/11 | First issue | PS | PS |
| 2 | 04/02/16 | Profiles and details updated | PS | PS |
| 3 | 13/05/20 | Components included & curved corner added | SM | PH |
| 4 | 25/08/20 | Glazing Panel Stop Bracket added | SM | SM |

Jamb / side detail

Title: Installation - Marlon Clickfix 1040 - VF|90 (metal frame)

Page: 3 of 8

Drawn by: PS

Dwg No:

Scale: NTS

Approved:

HC237/3

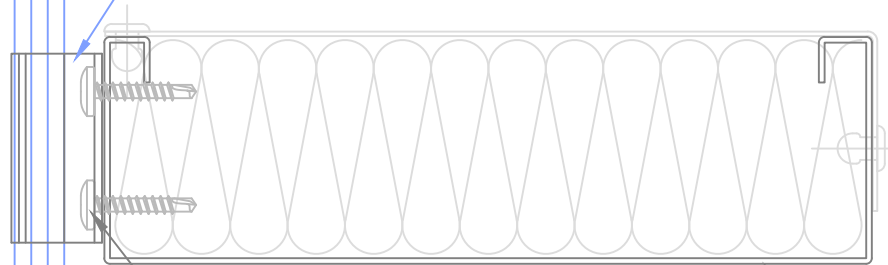
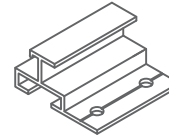


Daylight Systems

Coventry
 Alderman's Green Ind Est
 Coventry CV2 2QU
 024 7660 2022
 www.brettmartin.com

Marlon Clickfix 1040 polycarbonate sheet

AC401 E50 purlin clip



Stainless steel low profile head fastener, by others

Cladding rail by others

| Issue | Date | Change detail | Drawn by | Approved |
|-------|----------|---|----------|----------|
| 1 | 22/02/11 | First issue | PS | PS |
| 2 | 04/02/16 | Profiles and details updated | PS | PS |
| 3 | 13/05/20 | Components included & curved corner added | SM | PH |
| 4 | 25/08/20 | Glazing Panel Stop Bracket added | SM | SM |

Title: Installation - Marlon Clickfix 1040 - VF|90 (metal frame)

Page: 4 of 8

Drawn by: PS

Dwg No:

Scale: NTS

Approved:

HC237/4



Daylight Systems

Coventry

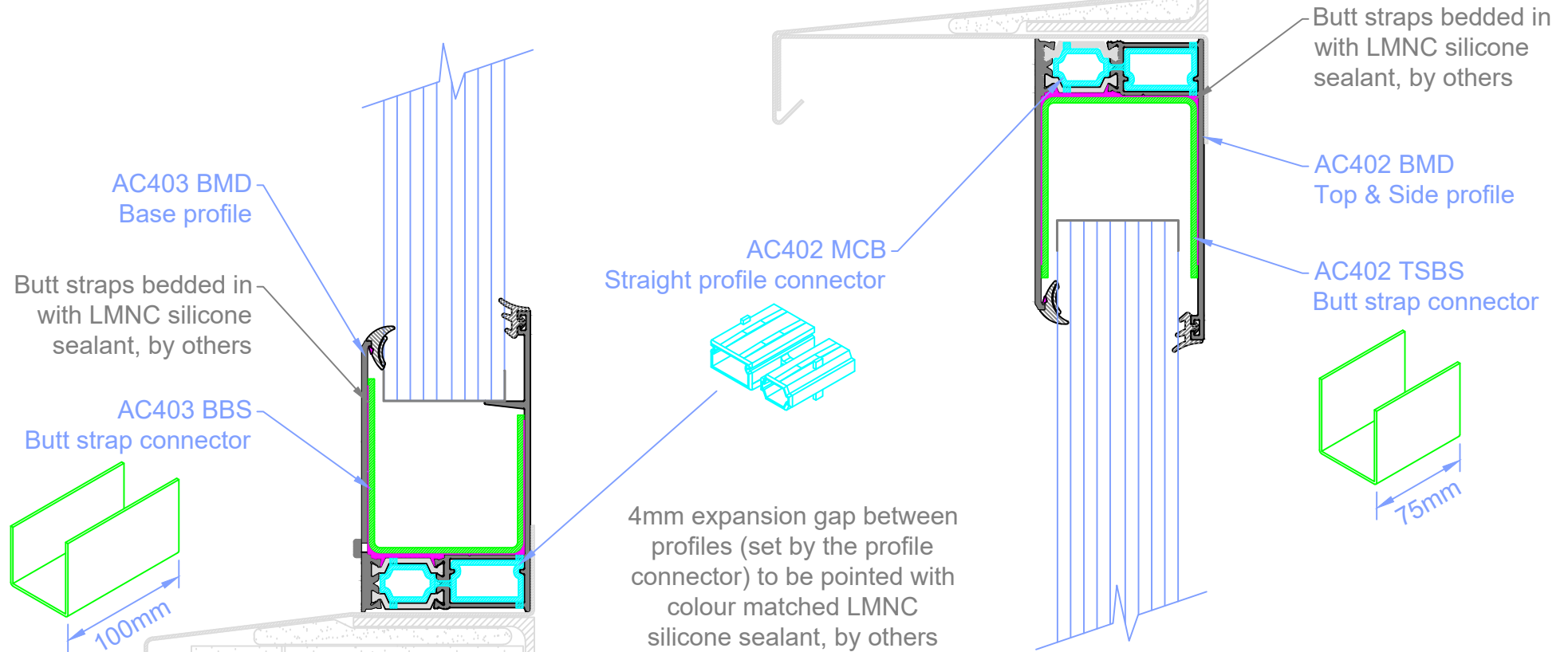
Alderman's Green Ind Est

Coventry CV2 2QU

024 7660 2022

www.brettmartin.com

Clip / mid detail



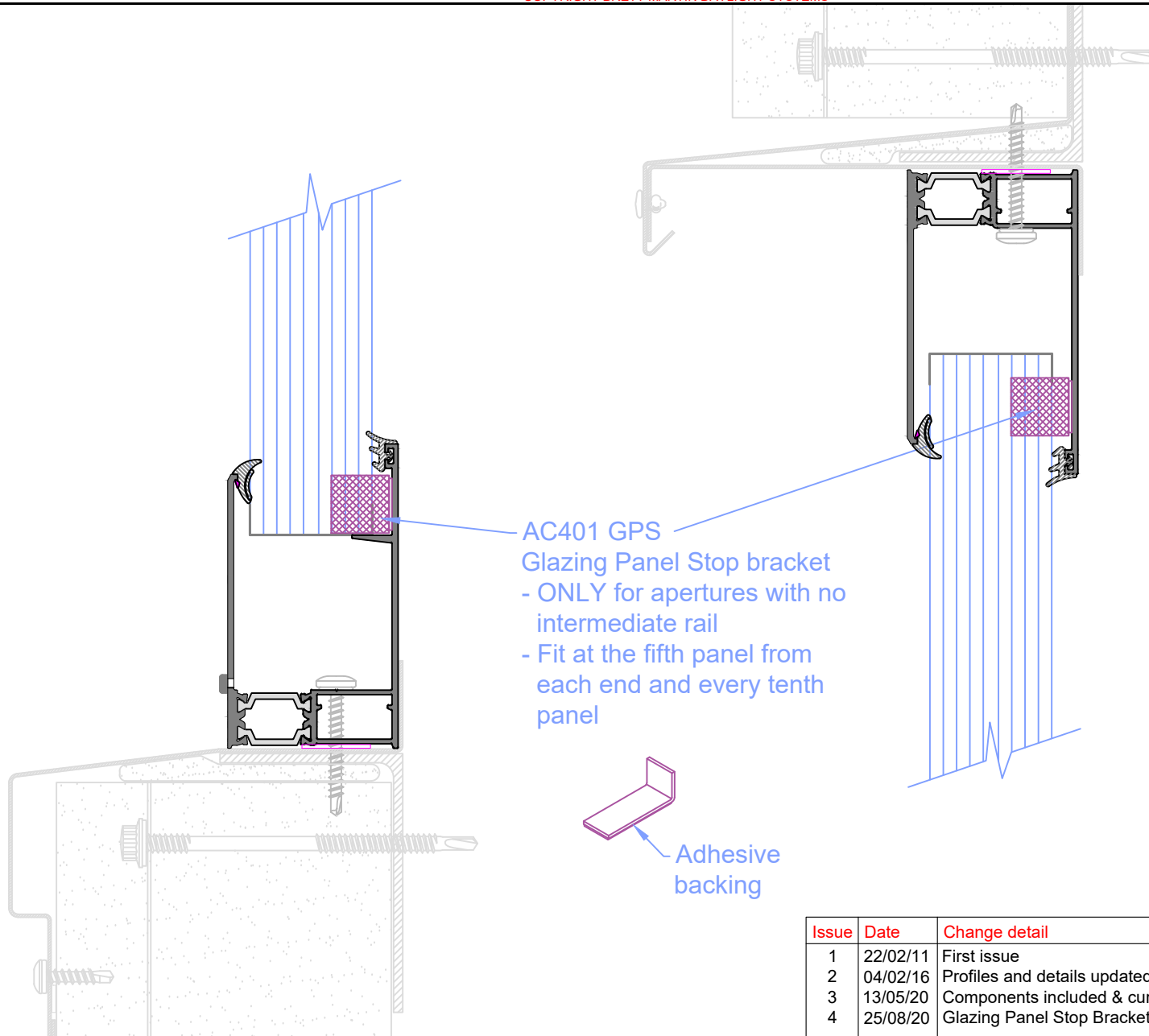
| Issue | Date | Change detail | Drawn by | Approved |
|-------|----------|---|----------|----------|
| 1 | 22/02/11 | First issue | PS | PS |
| 2 | 04/02/16 | Profiles and details updated | PS | PS |
| 3 | 13/05/20 | Components included & curved corner added | SM | PH |
| 4 | 25/08/20 | Glazing Panel Stop Bracket added | SM | SM |



Coventry
 Alderman's Green Ind Est
 Coventry CV2 2QU
 024 7660 2022
 www.brettmartin.com

Profile join detail

| | | |
|---|---------------------|----------------|
| Title: Installation - Marlon Clickfix 1040 - VF 90 (metal frame) | | |
| Page: 5 of 8 | Drawn by: PS | Dwg No: |
| Scale: NTS | Approved: | HC237/5 |



AC401 GPS
 Glazing Panel Stop bracket
 - ONLY for apertures with no
 intermediate rail
 - Fit at the fifth panel from
 each end and every tenth
 panel

Adhesive
 backing

| Issue | Date | Change detail | Drawn by | Approved |
|-------|----------|---|----------|----------|
| 1 | 22/02/11 | First issue | PS | PS |
| 2 | 04/02/16 | Profiles and details updated | PS | PS |
| 3 | 13/05/20 | Components included & curved corner added | SM | PH |
| 4 | 25/08/20 | Glazing Panel Stop Bracket added | SM | SM |



Daylight Systems

Coventry
 Alderman's Green Ind Est
 Coventry CV2 2QU
 024 7660 2022
 www.brettmartin.com

Panel Stop Bracket
 - for applications with no
 intermediate rail / purlin clip

Title: Installation - Marlon Clickfix 1040 - VF|90 (metal frame)

Page: 6 of 8

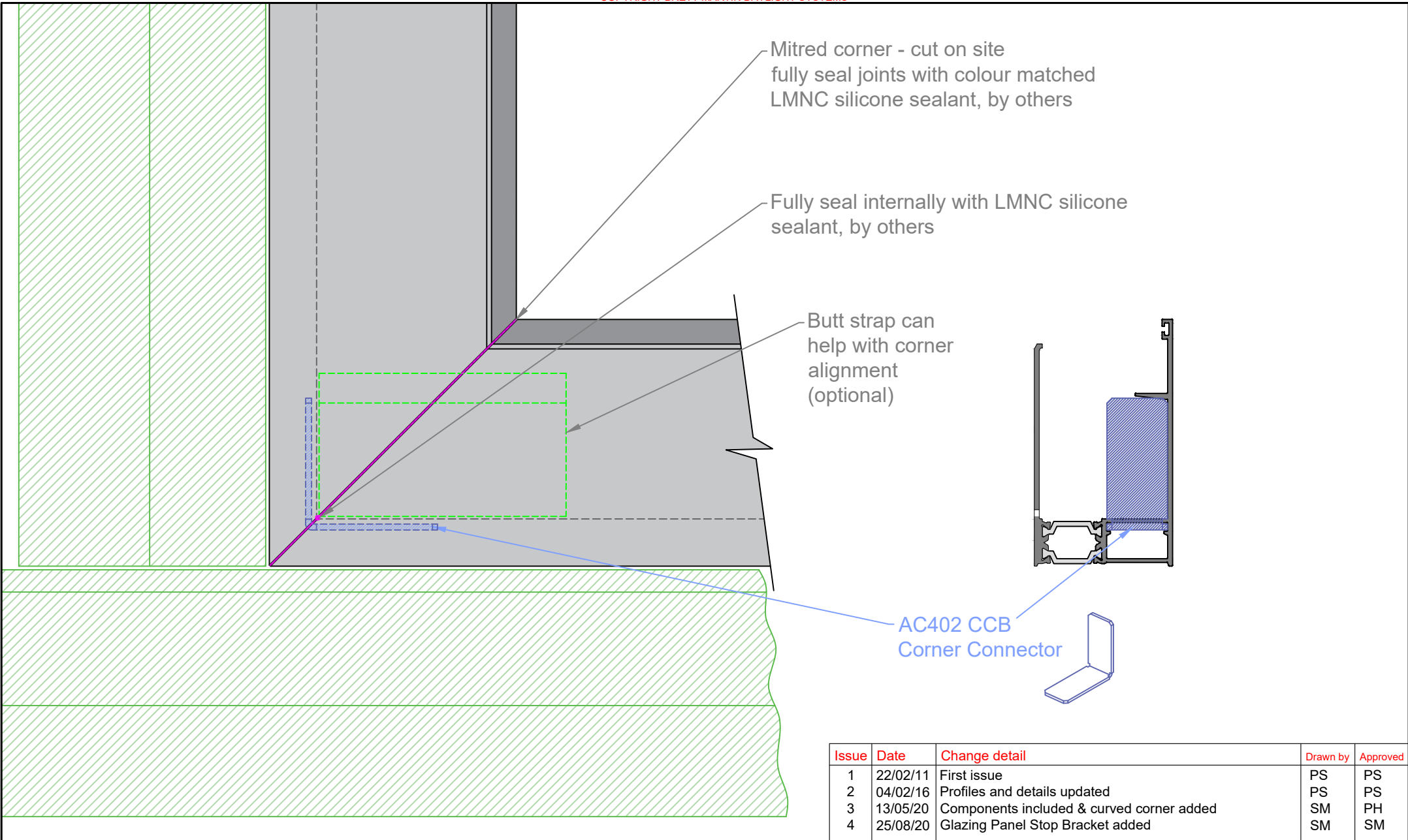
Drawn by: PS

Dwg No.:

Scale: NTS

Approved:

HC237/5



| Issue | Date | Change detail | Drawn by | Approved |
|-------|----------|---|----------|----------|
| 1 | 22/02/11 | First issue | PS | PS |
| 2 | 04/02/16 | Profiles and details updated | PS | PS |
| 3 | 13/05/20 | Components included & curved corner added | SM | PH |
| 4 | 25/08/20 | Glazing Panel Stop Bracket added | SM | SM |



Daylight Systems

Coventry
 Alderman's Green Ind Est
 Coventry CV2 2QU
 024 7660 2022
 www.brettmartin.com

Mitred corner detail

Title: Installation - Marlon Clickfix 1040 - VF|90 (metal frame)

Page: 7 of 8

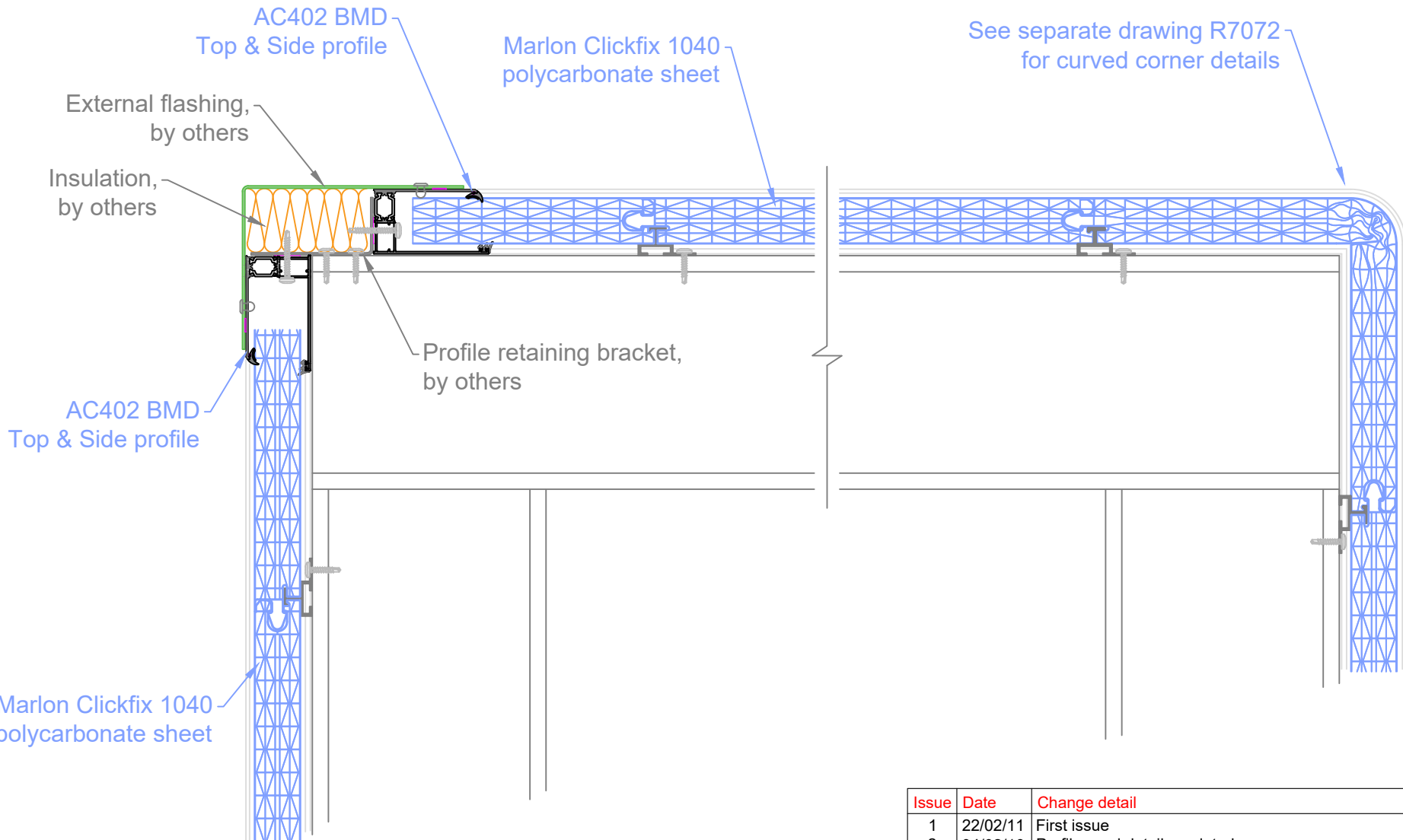
Drawn by: PS

Dwg No.:

Scale: NTS

Approved:

HC237/6



| Issue | Date | Change detail | Drawn by | Approved |
|-------|----------|---|----------|----------|
| 1 | 22/02/11 | First issue | PS | PS |
| 2 | 04/02/16 | Profiles and details updated | PS | PS |
| 3 | 13/05/20 | Components included & curved corner added | SM | PH |
| 4 | 25/08/20 | Glazing Panel Stop Bracket added | SM | SM |



Coventry
 Alderman's Green Ind Est
 Coventry CV2 2QU
 024 7660 2022
 www.brettmartin.com

Building corner detail

Title: Installation - Marlon Clickfix 1040 - VF|90 (metal frame)

Page: 8 of 8

Drawn by: PS

Dwg No.:

Scale: NTS

Approved:

HC237/7