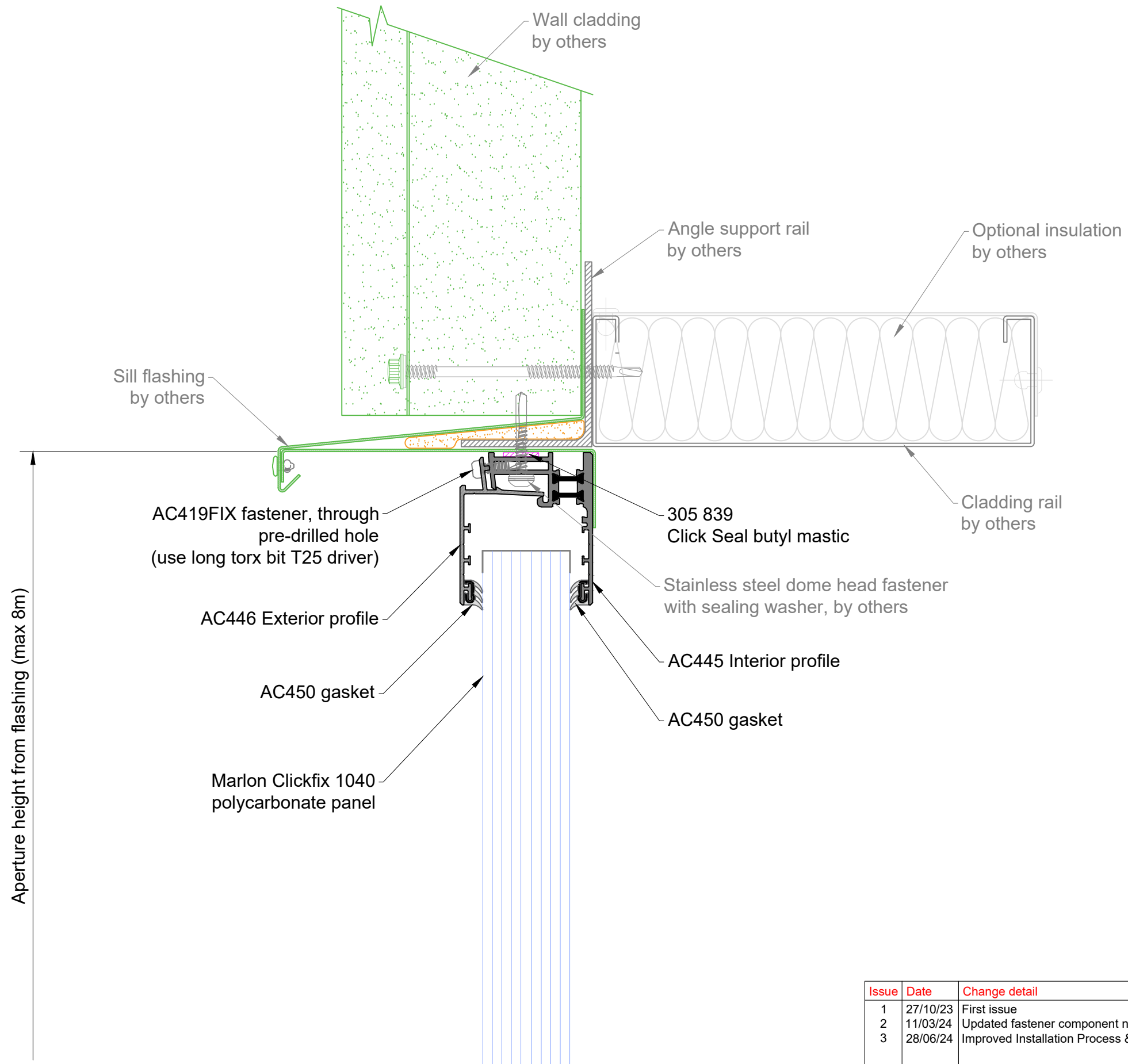
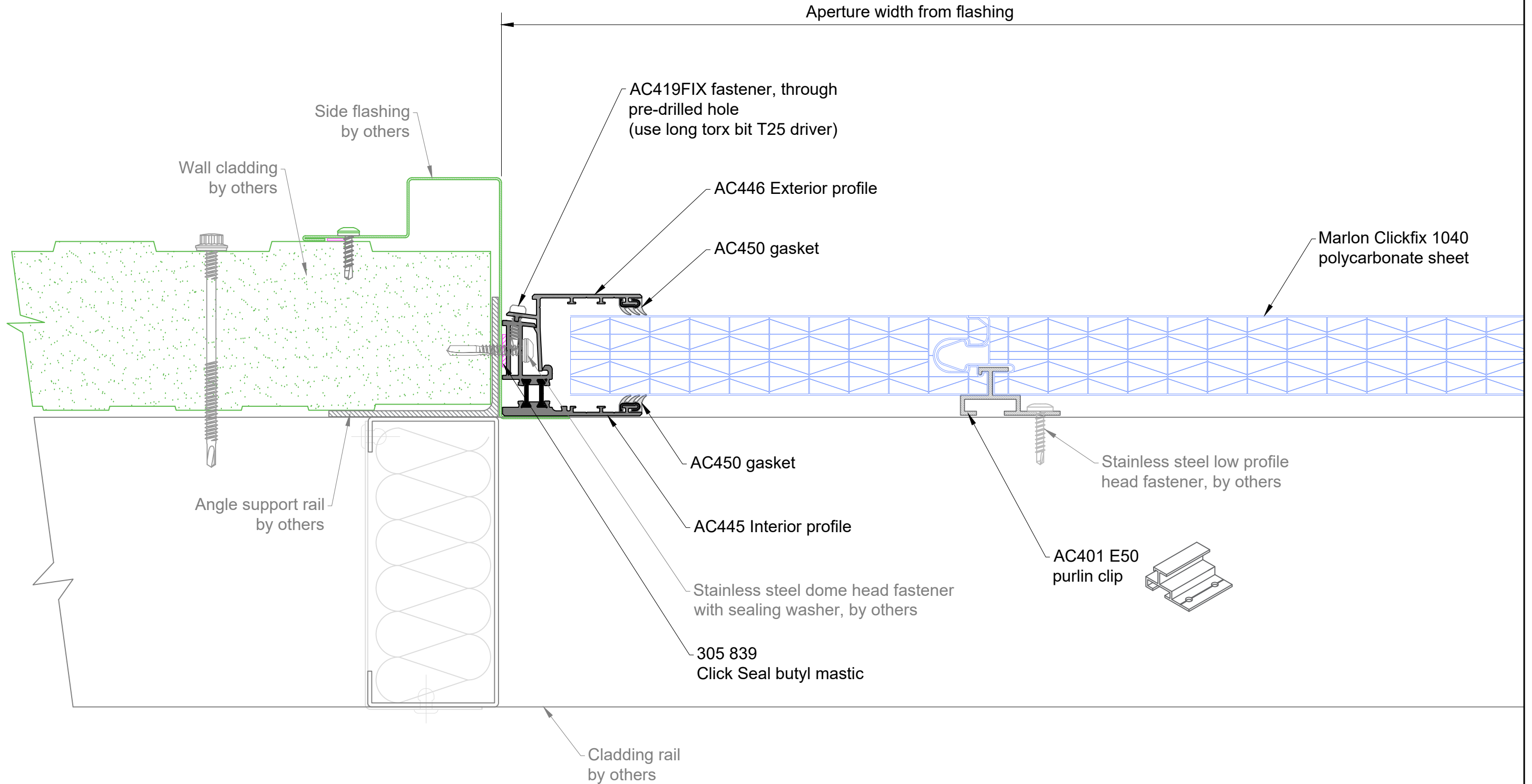


Issue	Date	Change detail	Drawn by	Approved
1	27/10/23	First issue	SM	PH
2	11/03/24	Updated fastener component numbers	JD	SM
3	28/06/24	Improved Installation Process & Clarity	JD	SM



Issue	Date	Change detail	Drawn by	Approved
1	27/10/23	First issue	SM	PH
2	11/03/24	Updated fastener component numbers	JD	SM
3	28/06/24	Improved Installation Process & Clarity	JD	SM



Issue	Date	Change detail	Drawn by	Approved
1	27/10/23	First issue	SM	PH
2	11/03/24	Updated fastener component numbers	JD	SM
3	28/06/24	Improved Installation Process & Clarity	JD	SM



Brett Martin Daylight Systems  
 Alderman's Green Ind Est  
 Coventry CV2 2QU  
 024 7660 2022  
 www.brettmartin.com

**STANDARD DETAILS - Jamb / side detail**

**Title:** Marlon Clickfix 1040 VF70 installation details

**Page:** 3 OF 12

**Drawn by:** JD

**Dwg No:**

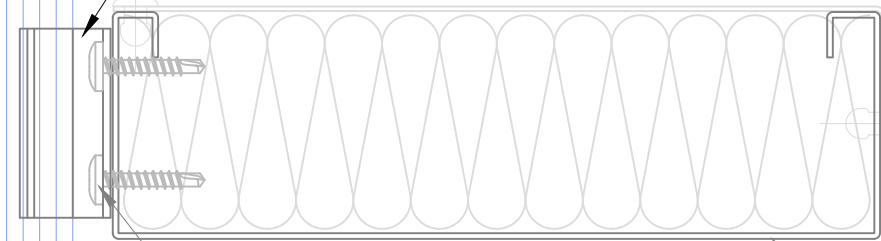
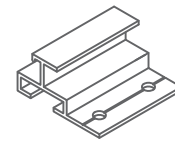
**Scale:** NTS

**Approved:** SM

**HC 629**

Marlon Clickfix 1040 polycarbonate sheet

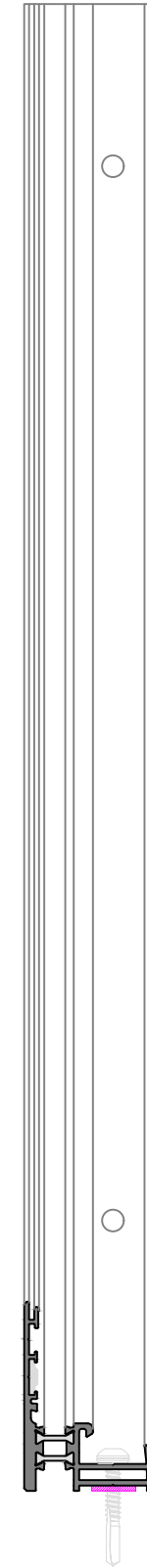
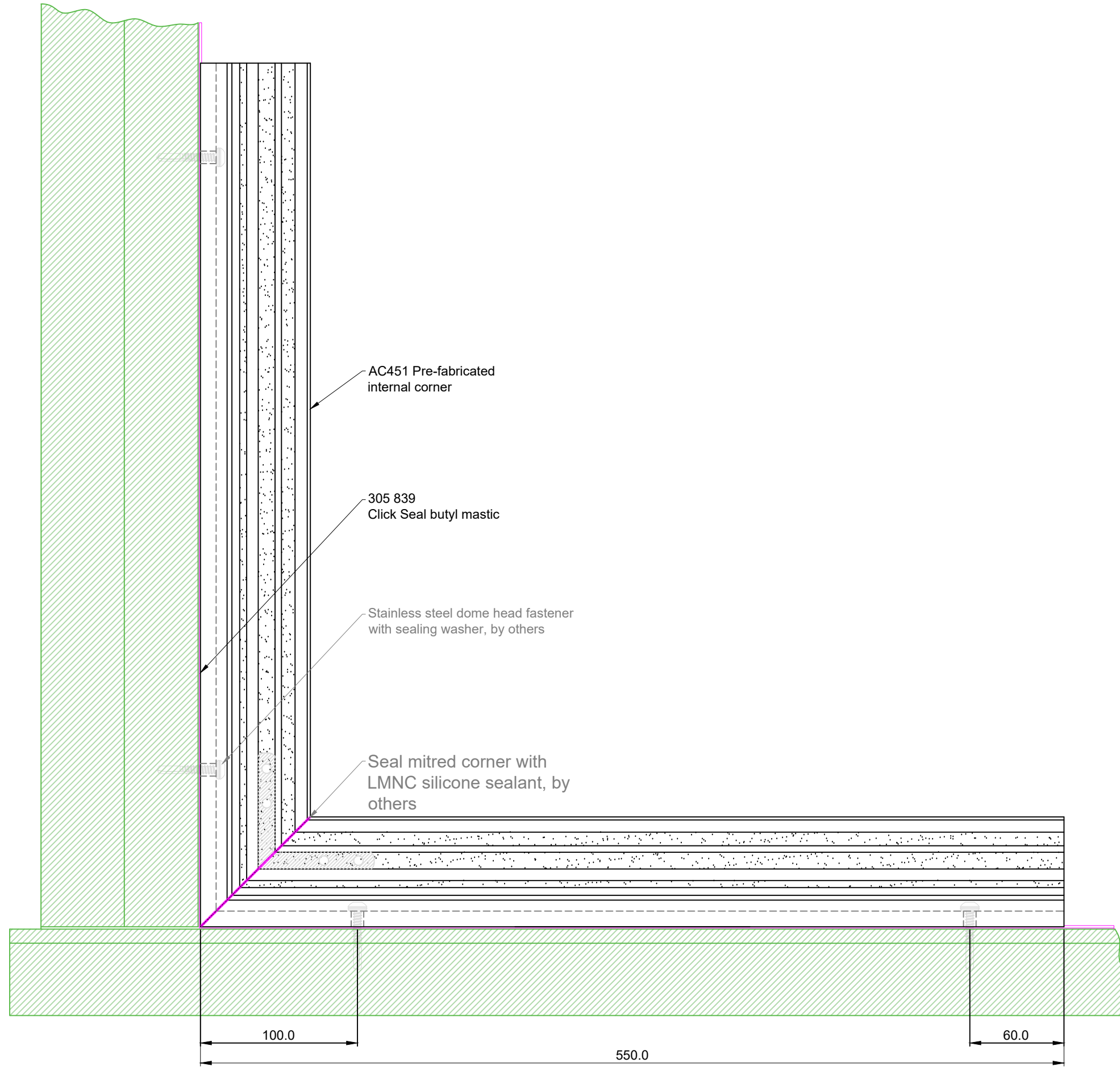
AC401 E50 purlin clip



Stainless steel low profile head fastener, by others

Cladding rail by others

Issue	Date	Change detail	Drawn by	Approved
1	27/10/23	First issue	SM	PH
2	11/03/24	Updated fastener component numbers	JD	SM
3	28/06/24	Improved Installation Process & Clarity	JD	SM



Issue	Date	Change detail	Drawn by	Approved
1	27/10/23	First issue	SM	PH
2	11/03/24	Updated fastener component numbers	JD	SM
3	28/06/24	Improved Installation Process & Clarity	JD	SM



Brett Martin Daylight Systems  
 Alderman's Green Ind Est  
 Coventry CV2 2QU  
 024 7660 2022  
 www.brettmartin.com

**STANDARD DETAILS - Internal corner**

**Title:** Marlon Clickfix 1040 VF70 installation details

**Page:** 5 OF 12

**Drawn by:** JD

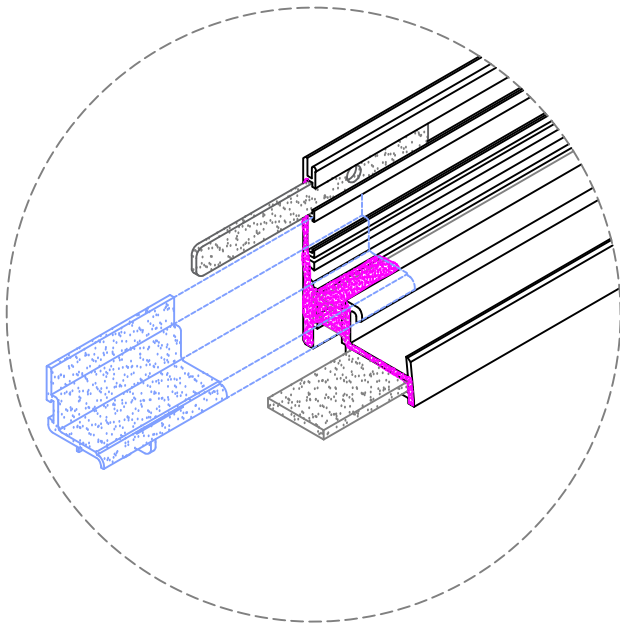
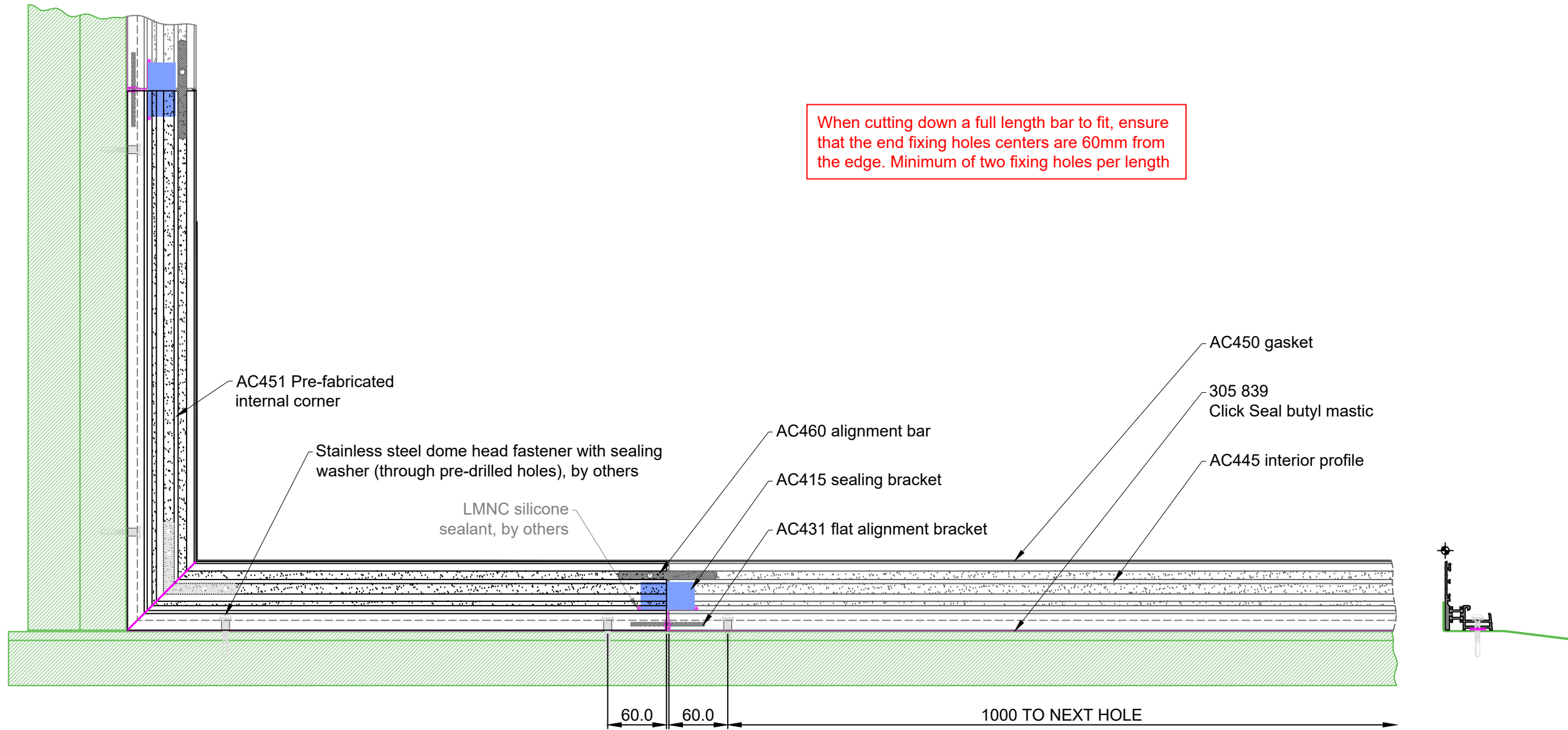
**Dwg No:**

**Scale:** NTS

**Approved:** SM

**HC 629**

When cutting down a full length bar to fit, ensure that the end fixing holes centers are 60mm from the edge. Minimum of two fixing holes per length



- 1 AC415 - remove top tang and lower front prong (shown in gray)
- 2 Slide in AC460 and AC431 alignment bar, push up to the profile fixing screw
- 3 Apply LMNC silicone sealant as shown to end of AC445 interior profile
- 4 Fit amended AC415 to AC445 interior profile
- 5 Prepare next AC445 interior profile with silicone sealant as shown
- 6 Slide on next AC445 interior profile and fix, fit AC450 gasket

Issue	Date	Change detail	Drawn by	Approved
1	27/10/23	First issue	SM	PH
2	11/03/24	Updated fastener component numbers	JD	SM
3	28/06/24	Improved Installation Process & Clarity	JD	SM



Brett Martin Daylight Systems  
Alderman's Green Ind Est  
Coventry CV2 2QU  
024 7660 2022  
www.brettmartin.com

**STANDARD DETAILS - Internal profile, joints**

Title: Marlon Clickfix 1040 VF70 installation details

Page: 6 OF 12

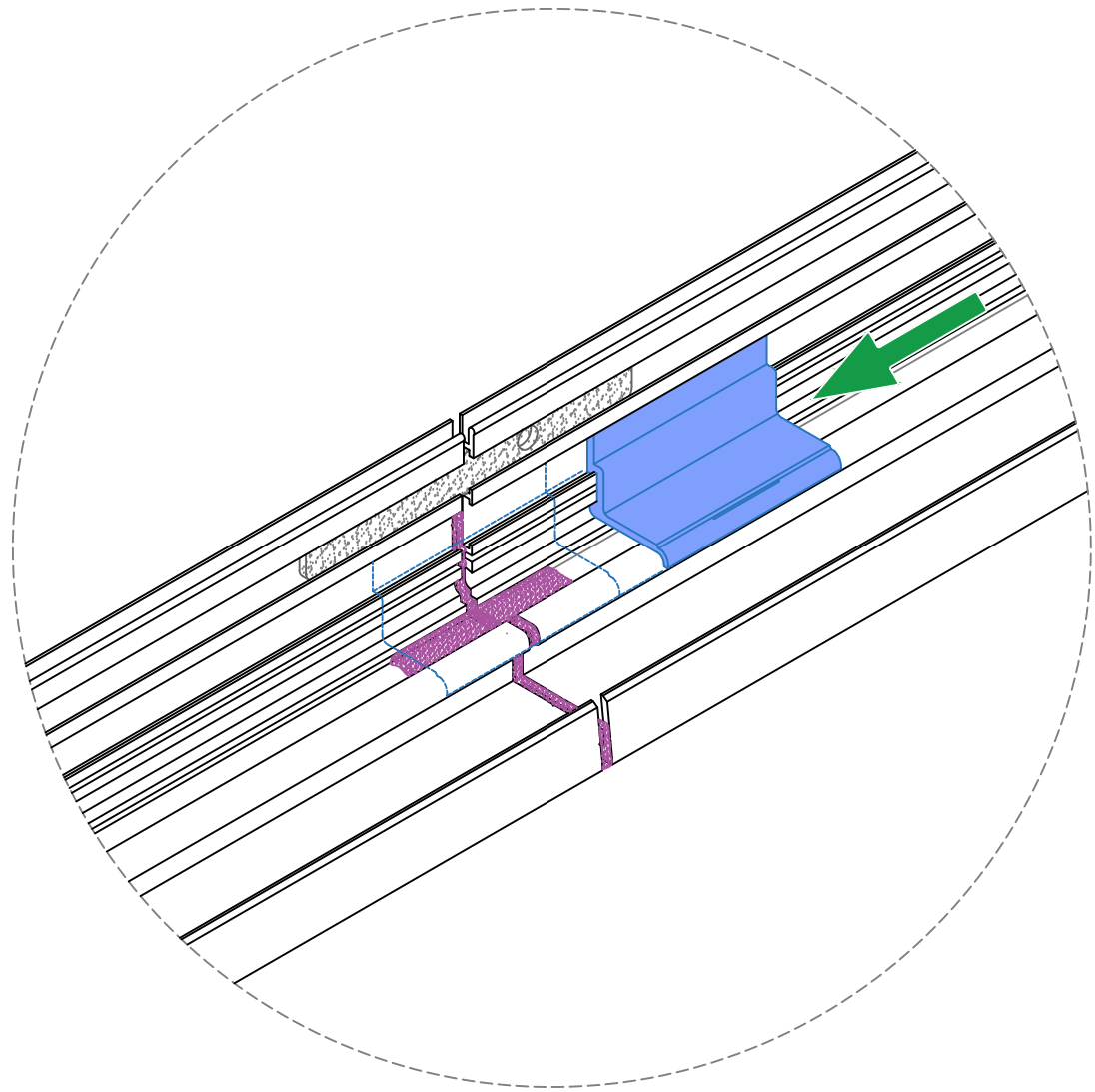
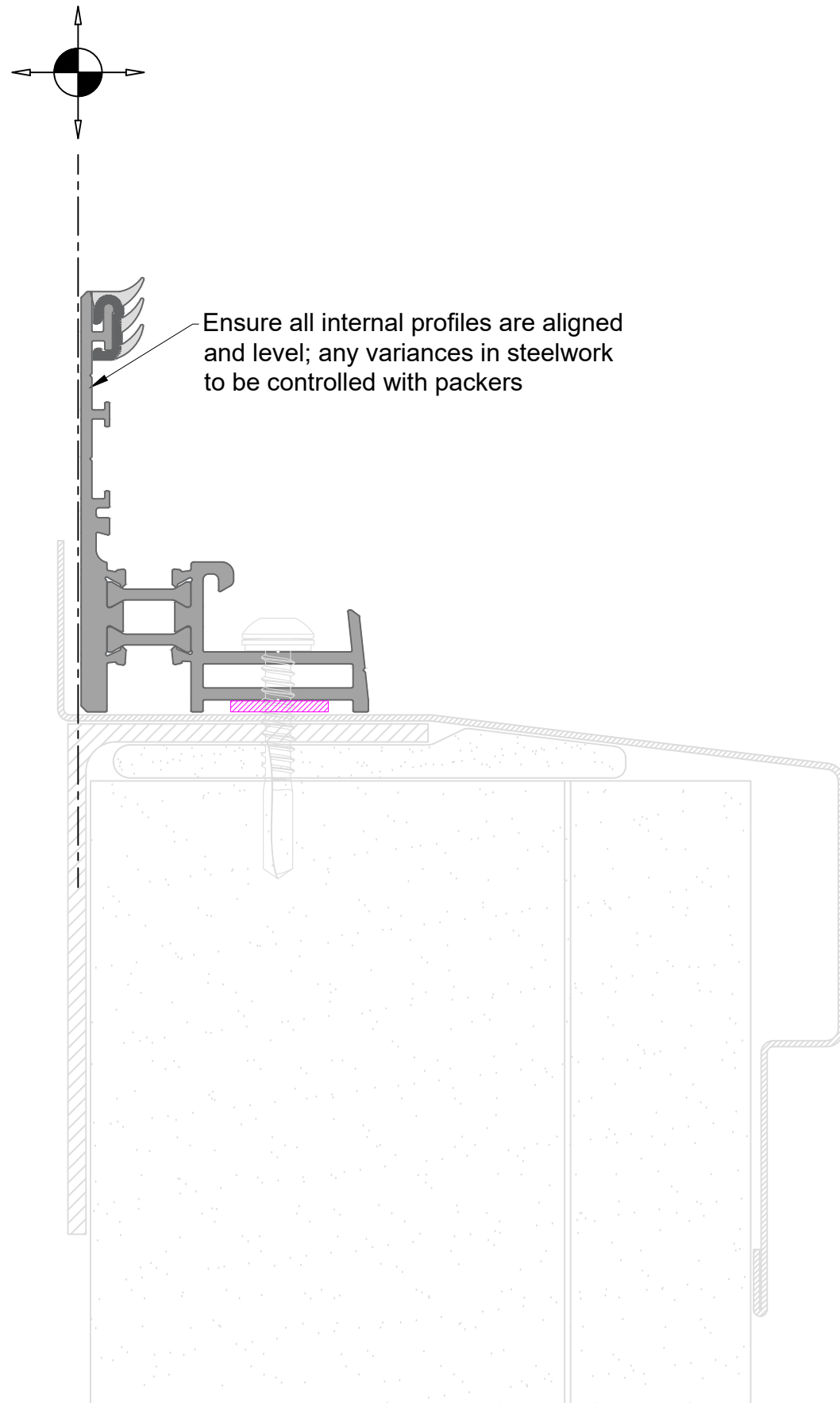
Drawn by: JD

Dwg No:

Scale: NTS

Approved: SM

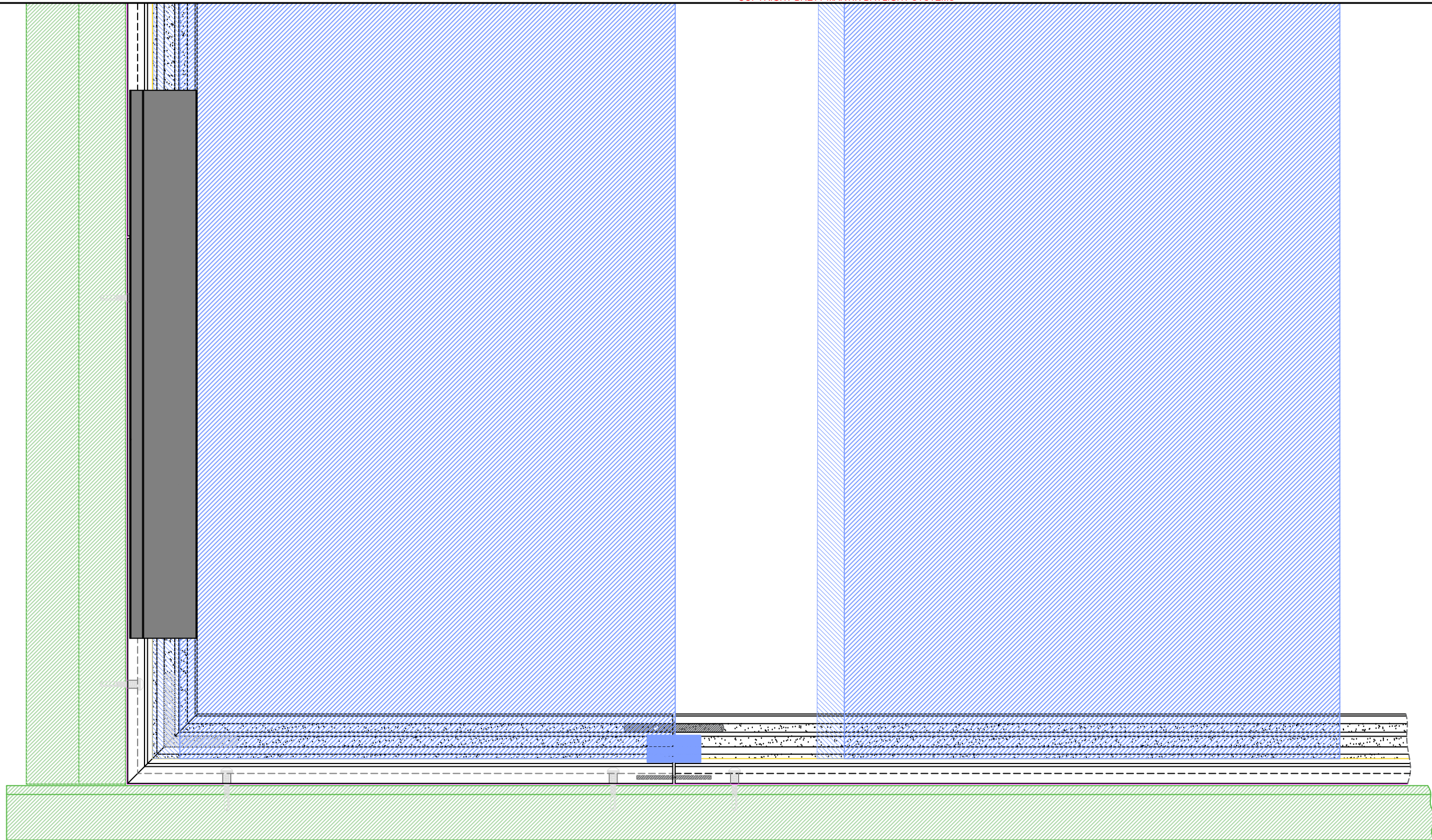
**HC 629**



AC415 - remove top tang and lower front prong (shown in gray)

- Before proceeding to the next stage ensure:
- All pre-drilled fixing holes are filled with a fixing screw
  - All joints between bars are properly sealed (Page 6 Step 3)
  - All bars have a minimum of 2 fixing screws
  - Gasket AC450 is fitted correctly

Issue	Date	Change detail	Drawn by	Approved
1	27/10/23	First issue	SM	PH
2	11/03/24	Updated fastener component numbers	JD	SM
3	28/06/24	Improved Installation Process & Clarity	JD	SM



**First Panel Guide**

1. Place first panel on the inner profile as per "Side Detail" & cross section.
2. Insert a length of the external bar positioned vertically next to the first panel
3. Slide the panel up against the external bar without leaving a gap.
4. Fit AC401 E50 purlin clip as per "Mid detail"

**Continuation Panel Guide**

1. Insert the next panel by clicking it into the previous panel as per "Side detail"
2. Fit AC401 E50 as per "Mid Detail"

Issue	Date	Change detail	Drawn by	Approved
1	27/10/23	First issue	SM	PH
2	11/03/24	Updated fastener component numbers	JD	SM
3	28/06/24	Improved Installation Process & Clarity	JD	SM



Brett Martin Daylight Systems  
 Alderman's Green Ind Est  
 Coventry CV2 2QU  
 024 7660 2022  
 www.brettmartin.com

**STANDARD DETAILS - External profile**

Title: Marlon Clickfix 1040 VF70 installation details

Page: 8 OF 12

Drawn by: JD

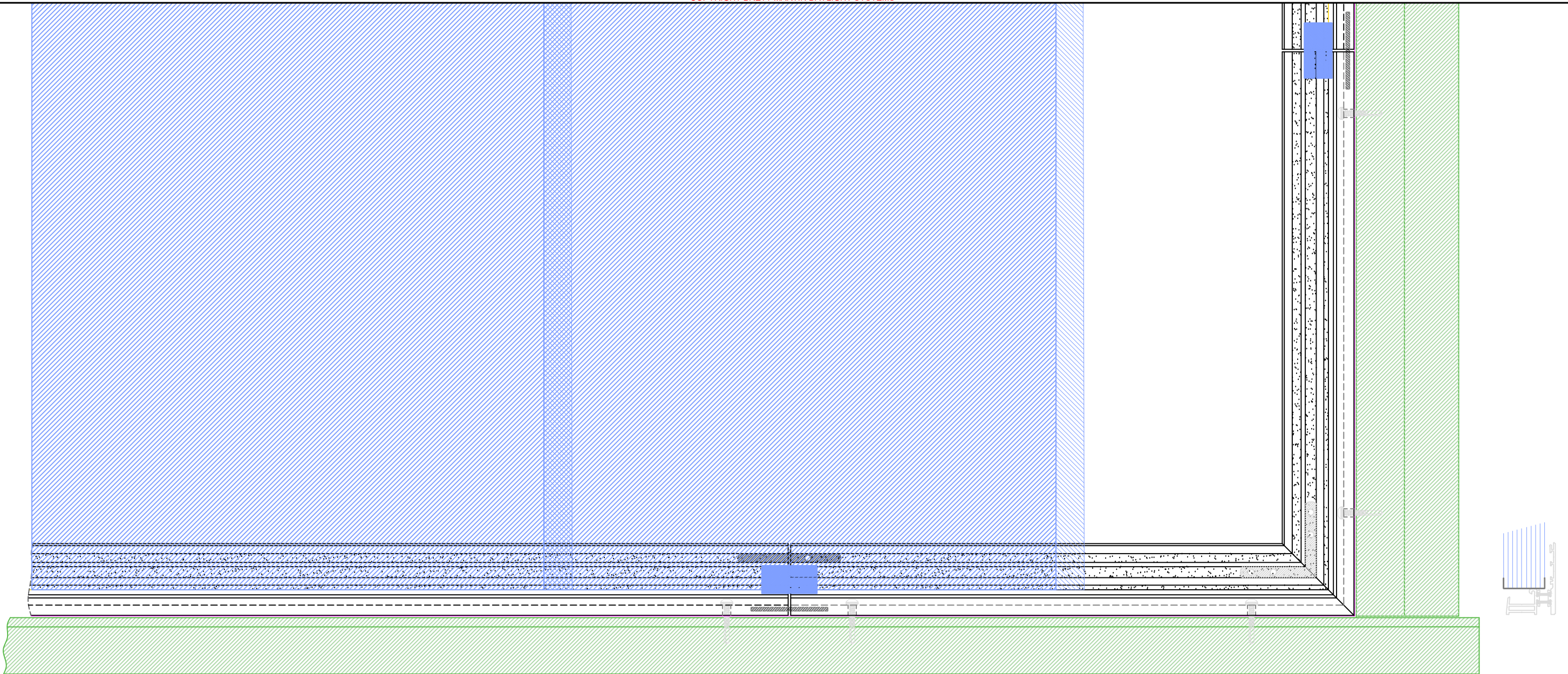
Dwg No:

Scale: NTS

Approved: SM

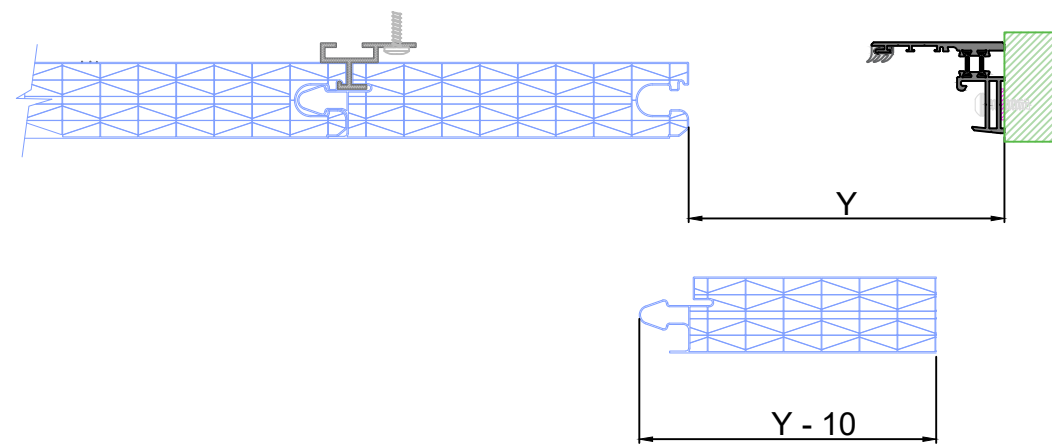
**HC 629**





**Final Panel Glazing Guide**

1. If the panel fits without needing to be cut down then proceed as per "Continuation Panel Guide"
2. If the panel needs to be cut down:
  - 2.1. Measure the distance between the flat section of previous panel to where the internal profile contacts the aperture ( Y )
  - 2.2. Cut down the final panel to width = ( Y - 10 )
  - 2.3. Angle the penultimate panel outwards slightly to click in the final panel
  - 2.4. Once engaged the final panel will fit into the vertical internal profile



Issue	Date	Change detail	Drawn by	Approved
1	27/10/23	First issue	SM	PH
2	11/03/24	Updated fastener component numbers	JD	SM
3	28/06/24	Improved Installation Process & Clarity	JD	SM



Brett Martin Daylight Systems  
 Alderman's Green Ind Est  
 Coventry CV2 2QU  
 024 7660 2022  
 www.brettmartin.com

**STANDARD DETAILS - External profile**

**Title:** Marlon Clickfix 1040 VF70 installation details

**Page:** 9 OF 12

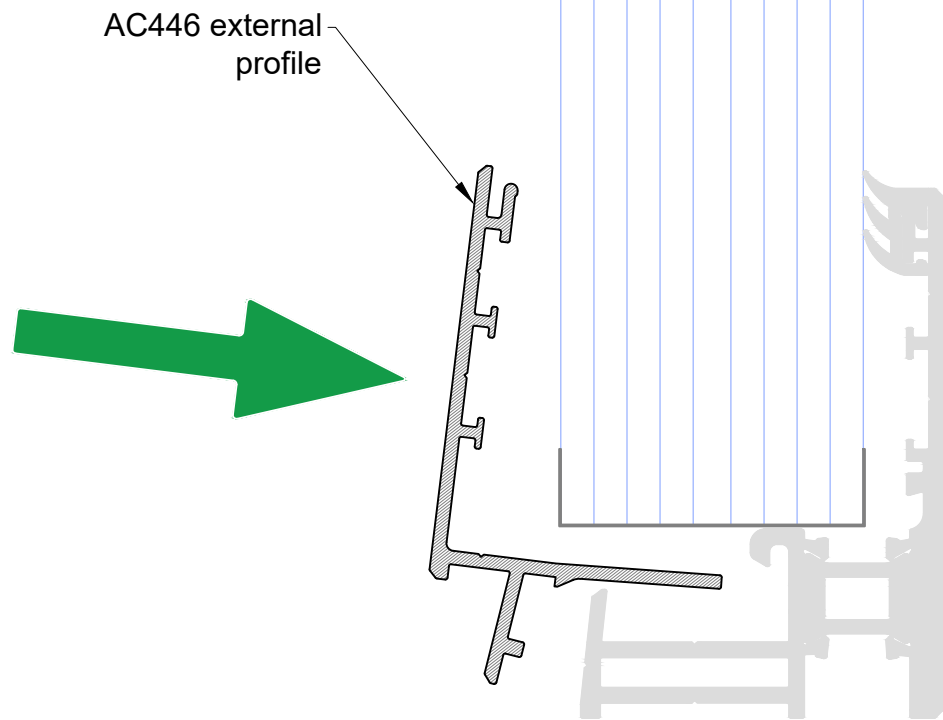
**Drawn by:** JD

**Dwg No:**

**Scale:** NTS

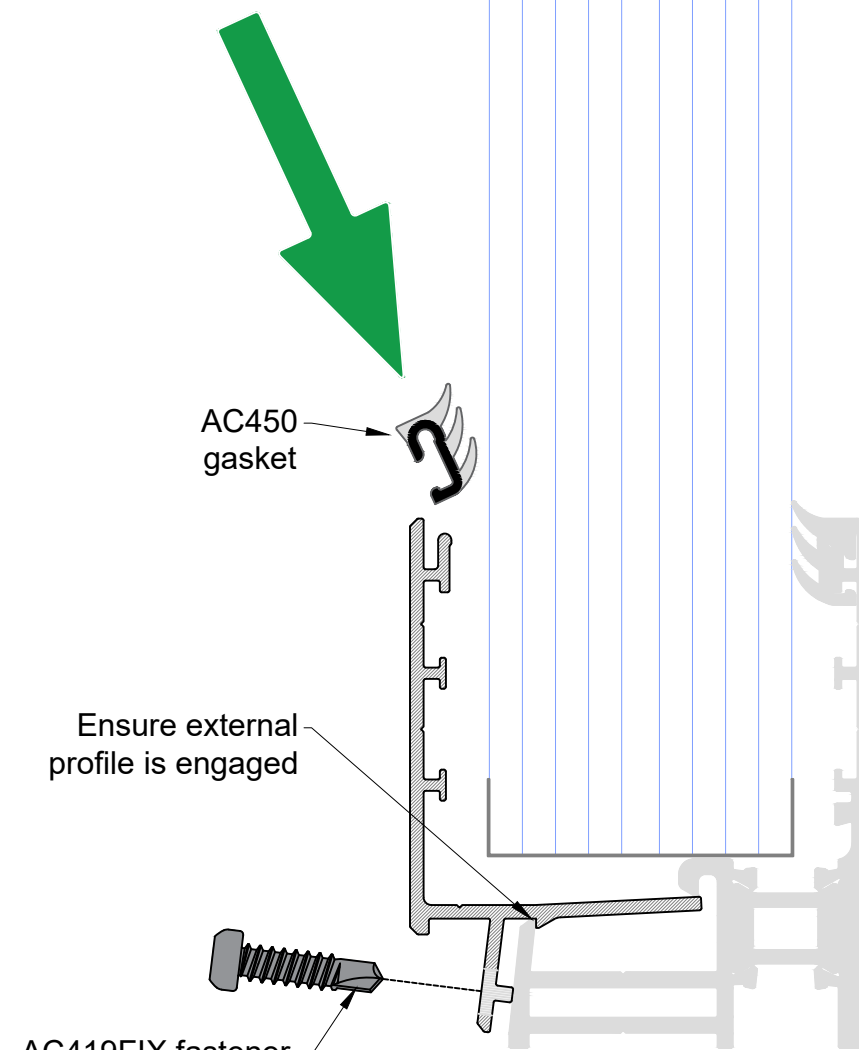
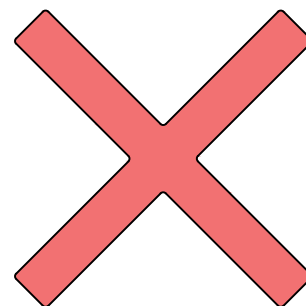
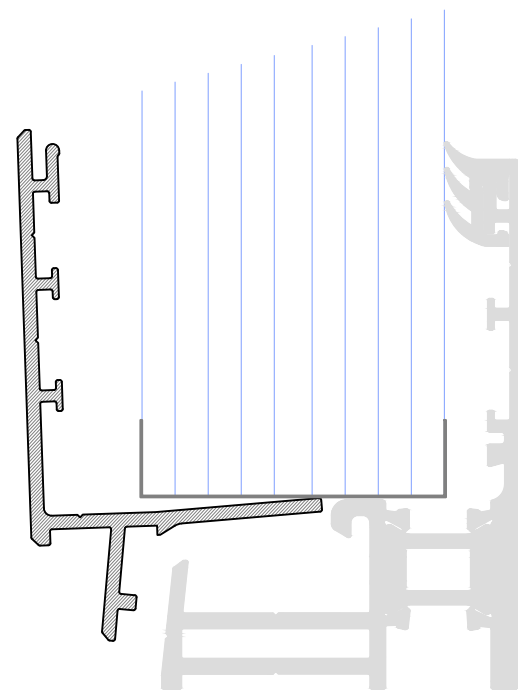
**Approved:** SM

**HC 629**



1

Rotate external profile into position & engage with internal profile

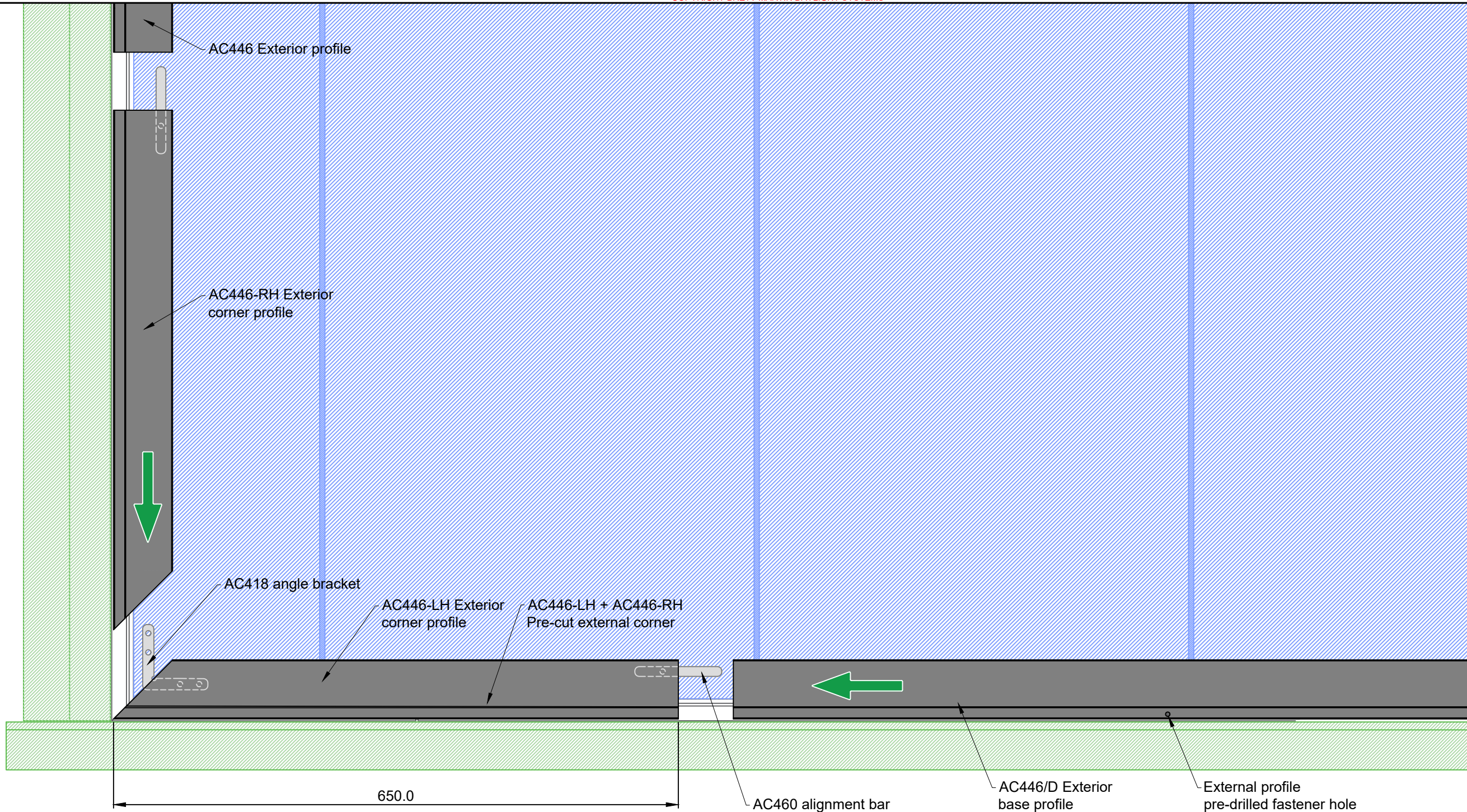


2

Fit gasket and front fastener

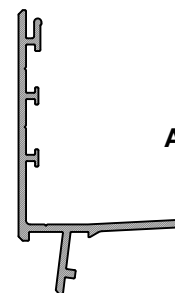
(a short section of gasket can be used to temporarily hold the external profile in place if required)

Issue	Date	Change detail	Drawn by	Approved
1	27/10/23	First issue	SM	PH
2	11/03/24	Updated fastener component numbers	JD	SM
3	28/06/24	Improved Installation Process & Clarity	JD	SM

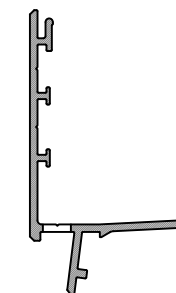


**Notes:**

- Fit corner sections first the fit then the straight bar sections between
- For the last straight section the AC460 alignment bar needs to be full inserted into the AC446 external profile then slid back past the joint once external profile fitted
- All straight joints to have 1mm dry gap, use 1mm shim (provided) to set distance
- Base Exterior Profile AC446/D will be packaged separately as there are drainage holes present - ensure the drainage profile is fixed to the bottom of the aperture
- If cutting Base Exterior Profile AC446/D down to size to fit aperture, ensure that drainage holes are present

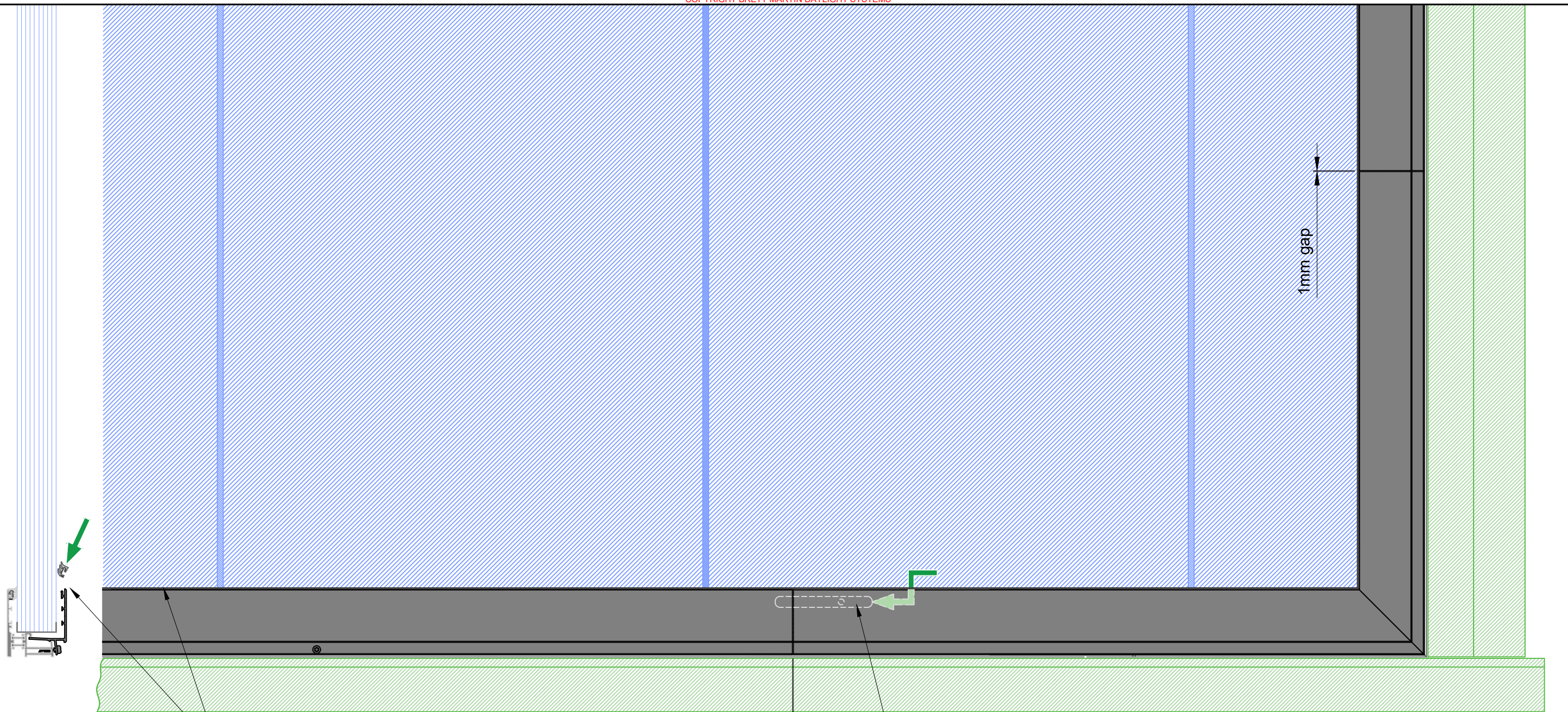


AC446 - VF70 external profile



AC446/D - VF70 external profile - drainage base

Issue	Date	Change detail	Drawn by	Approved
1	27/10/23	First issue	SM	PH
2	11/03/24	Updated fastener component numbers	JD	SM
3	28/06/24	Improved Installation Process & Clarity	JD	SM



Fit AC450 gasket to exterior frame

1mm gap

Slide the AC460 alignment bar into place once external profiles fitted

Note:

- For the last straight section the AC460 alignment bar needs to be full inserted into the AC446 external profile & slid back past the joint once external profile fitted.
- To do this place a L shaped tool (Hex key, L scribe, L pick) within the gap between profile & panel and tease the bracket laterally.
- Check & ensure that all gaps are correct and all alignment bars are engaged before fitting the AC450 gasket
- It is strongly recommended that a gasket roller is used to ensure that the gasket is seated properly - especially in the corners.

Issue	Date	Change detail	Drawn by	Approved
1	27/10/23	First issue	SM	PH
2	11/03/24	Updated fastener component numbers	JD	SM
3	28/06/24	Improved Installation Process & Clarity	JD	SM



Brett Martin Daylight Systems  
 Alderman's Green Ind Est  
 Coventry CV2 2QU  
 024 7660 2022  
 www.brettmartin.com

**STANDARD DETAILS - External profile**

Title: Marlon Clickfix 1040 VF70 installation details

Page: 12 OF 12 Drawn by: JD

Dwg No: HC 629

Scale: NTS Approved: SM